

InfraSuite Manager Introduction

Functional Module: PUE Energy

External Customer

05/03/2017

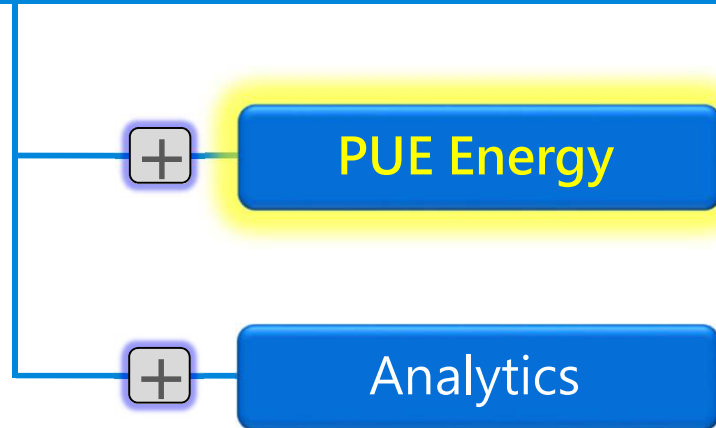
Delta / MCIS/ Jesse



InfraSuite Manager Functional Modules



Operation



PUE Energy(5063057500) functional module has implemented the energy measurement, PUE calculation, electricity tariff formula, energy report and historical data analysis.

PUE Energy Module Spec.

► Measurement

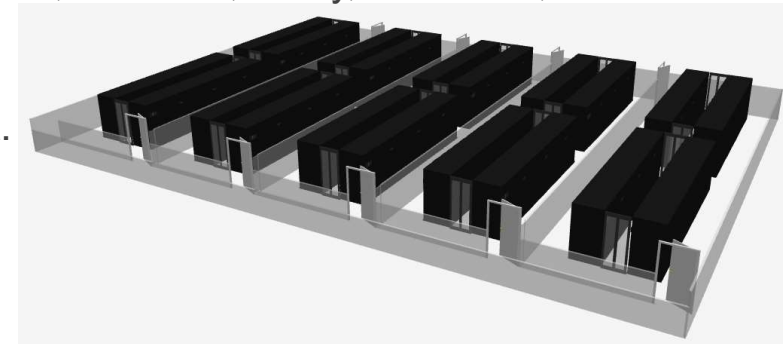
- Power Meter Protocol: Support RS232/485 Modbus ASCII/RTU, Modbus TCP、SNMP.
- Virtual Power Meter: Can reference any device protocol items to generate the energy value.
- The energy value is automatically summarized as hour, day, week, month and year.

► PUE Calculation

- The power usage can be classified(e.g. Total, IT, cooling, UPS, Illumination, others).
- The PUE formula is based on the classified power usage.
- Meet the PUE measurement level 1, 2, 3 and period 'Y', 'M', 'W', 'D'.
- The PUE component in the layout plan displays the value for : real-time, this hour, today, this week, month to date and year to date.
- Easily to query and display the PUE history data by line or bar chart.

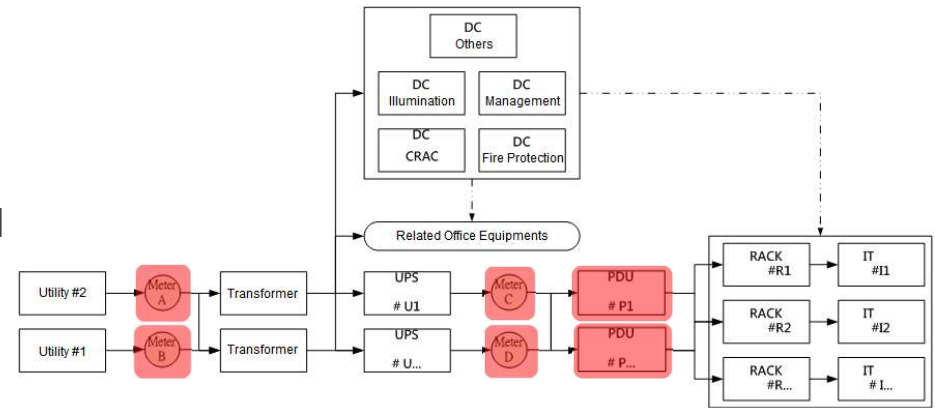
► Electricity Tariff Formula

- Tariff formula can be configured for multiple time segments.
- Can configure the basic and floating tariff formula, overload fine and power factor reward.
- Can define the summer season, holiday, weekend and working days for a tariff formula.



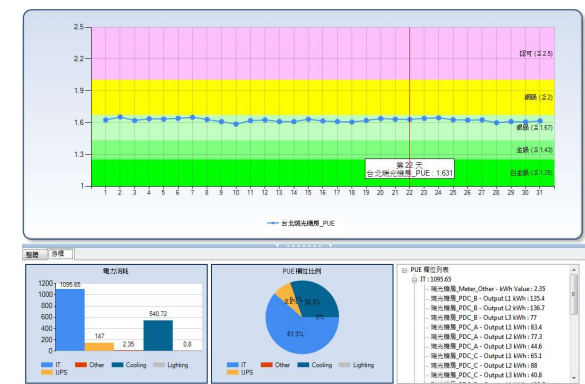
► Equipment

- Energy module installs in the same EMS3000 host.
- Based on the PUE measurement level, install the power meter, PDC or PDU.
- If the chiller, cooling tower and pump are not measured by a power meter then please install the flow meter and temperature sensors for monitoring the input and return water.



► Function

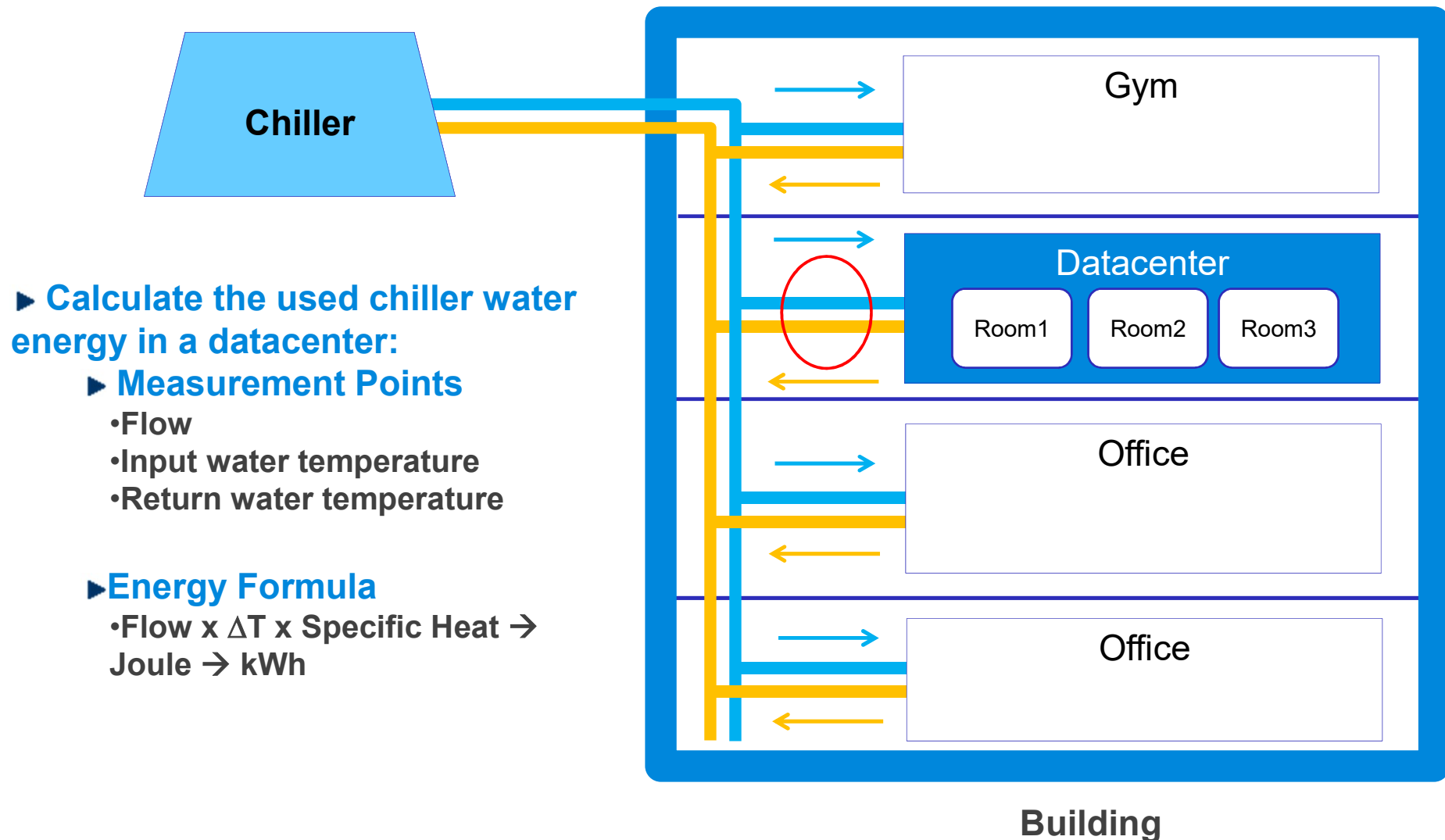
- Classify the energy usage in a datacenter.
- Calculate the datacenter PUE, power consumption and cooling capacity.
- Calculate the PUE, power consumption and cooling capacity from each room in a datacenter.
- PUE component: real-time, day, week, month and year.
- Query the history PUE data by line or bar chart.
- Each rack can calculate its power consumption.



Energy Calculation by Sharing The Same Chiller

► Use a virtual device to simulate a power meter

- Purpose: To provide the kWh value for the energy usage which cannot just install a power meter.



Building

Mission Critical Infrastructure Solutions(MCIS)

The power behind competitiveness

To learn more about Delta,
please visit www.deltaww.com

